
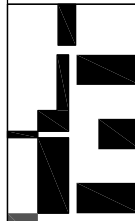
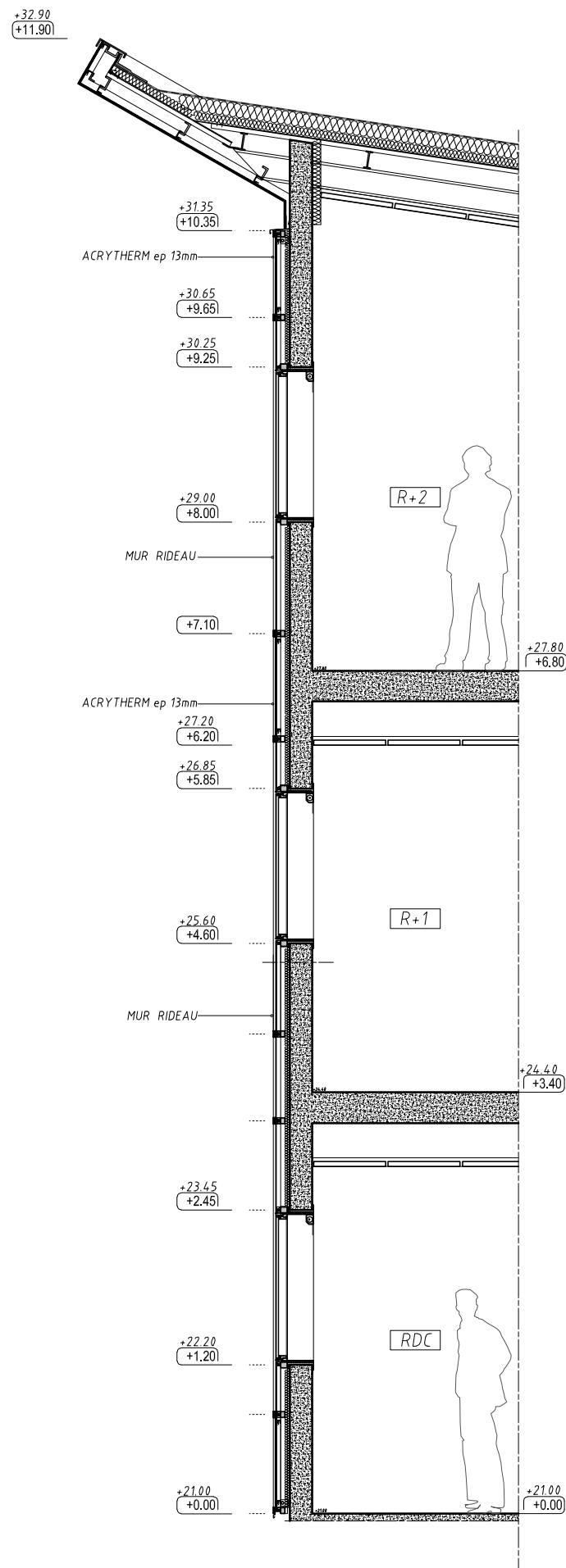


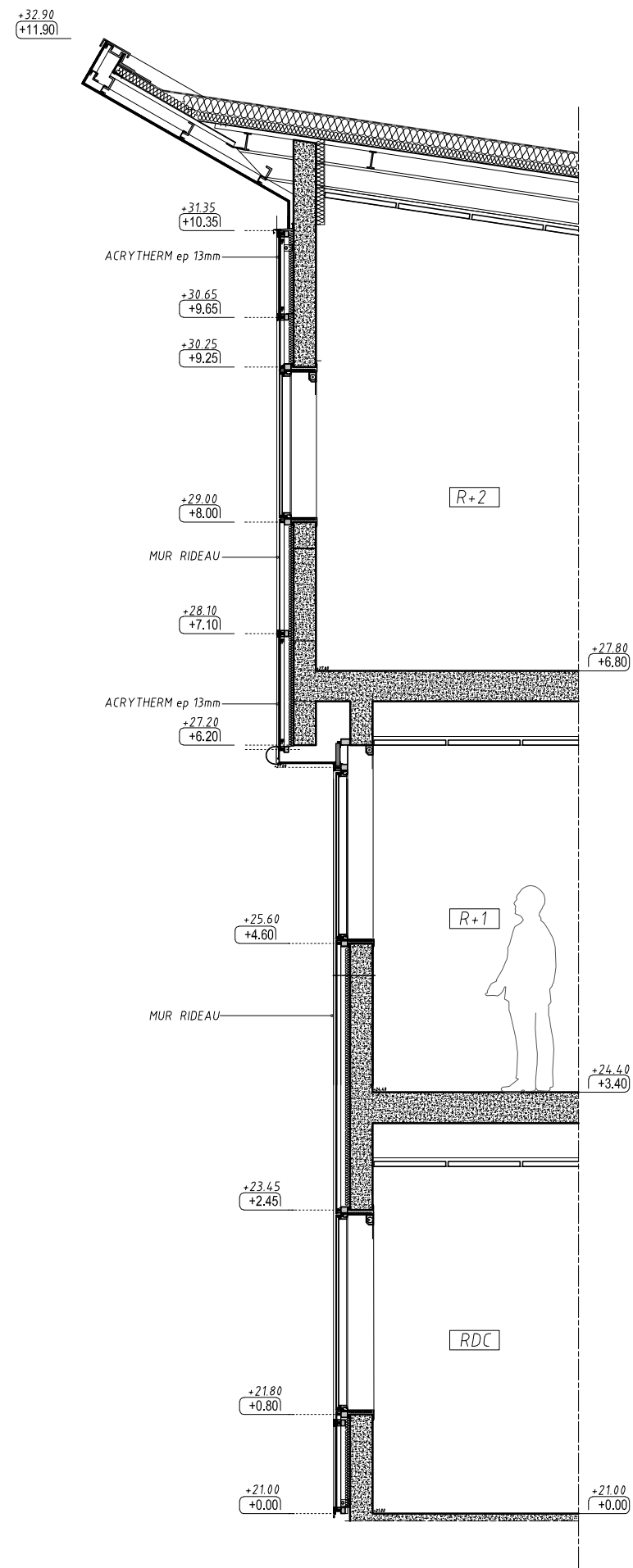
SOMMAIRE

| | |
|---|--------|
| 01 ETAT ACTUEL COUPE Façade SO | 1/50° |
| 02 PROJET COUPE Façade SO partie courante | 1/50° |
| 03 ETAT ACTUEL Façade SO partie courante | 1/15° |
| 04 ETAT ACTUEL Façade SO partie de biais | 1/15° |
| 05 PROJET Façade SO partie courante | 1/15° |
| 06 PROJET Façade SO partie de biais | 1/15° |
| 07 ACTUEL/PROJET Menuiserie amphi 300 | 1/10° |
| 08 ETAT ACTUEL Acrotères Ouest | 1/20° |
| 09 ETAT ACTUEL Verrière | 1/20° |
| 10 ETAT ACTEL Acrotères Est | 1/20° |
| 11 PROJET Acrotères Ouest | 1/20° |
| 12 PROJET Verrière | 1/20° |
| 13 PROJET Acrotères Est | 1/20° |
| 14 PROJET Carnet de menuiserie | 1/50° |
| 15 PROJET Murs rideaux | 1/100° |

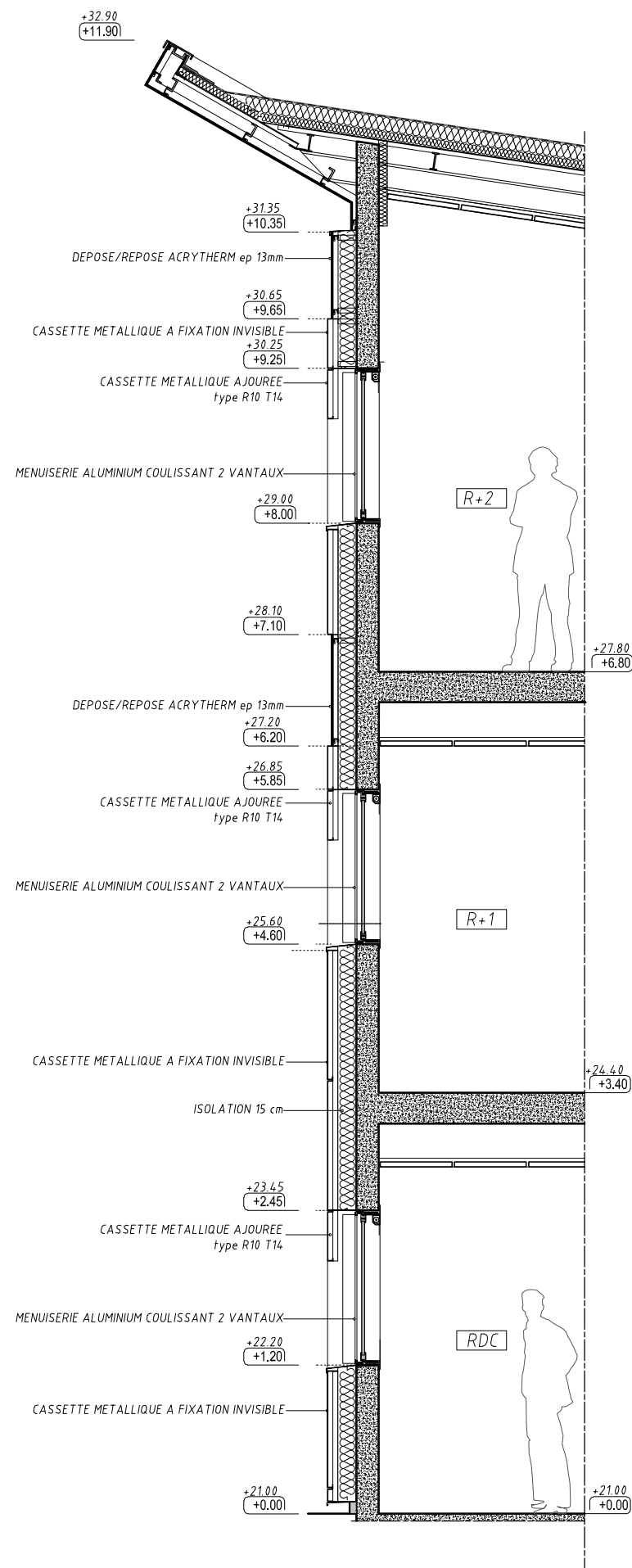
| | |
|---|--|
| <div>BATIMENT R DE L'E.N.S.A.M. REHABILITATION THERMIQUE</div> <div>2 Boulevard du Ronceray49 000 ANGERS</div> | |
| <div>MAITRE D'OUVRAGE</div> <div>Rectorat de l'académie de Nantes 8, rue du général Margueritte44 326 NANTES Cedex 3</div> | |
|  | |
| DCE | 24.09.21 |
| | 410 |
| CARNET DETAILS | |
| MODIFICATIONS | DATES |
| | |
| <div><div>ÉDIFICES ARCHITECTES</div><div>SAMUEL DE BOURGUES</div><div>ARCHITECTE D.P.L.G. 10 rue Chaussée Saint-Pierre Tél 02 41 87 95 0049100 ANGERS Fax 02 41 87 34 75</div></div> <div>agence@edifices-architectes.fr</div> | ARCHITECTES |
| <div>TECHNIQUES ET CHANTIERS</div> <div>72, boulevard de Strasbourg49000 ANGERS Tél 02 41 66 14 31</div> | <div>ECONOMISTE</div> <div>angers@techniquesetchanti.fr</div> |
| <div>ISOCRATE</div> <div>6, rue des Sassafra BP7012144031 NANTES cedex3 Tél 02 51 89 77 50Fax 02 51 89 03 78</div> | <div>BET FLUIDES</div> <div>infos@isocrate.com</div> |
| <div>EVEN STRUCTURES</div> <div>11 rue des Noyers BP 5071449007 ANGERS Cedex 01 Tél 02 41 87 58 05Fax 05 41 86 09 38</div> | <div>BET STRUCTURE</div> <div>contact@even-structures.fr</div> |
| <div>DBACOUSTIQUE</div> <div>20 rue de la Chevallerie49800 TRELAZE Tél 02 41 87 21 26Fax 05 41 87 60 73</div> | <div>BET ACOUSTIQUE</div> <div>secretariat@dbacoustique.fr</div> |
| | |
| | |



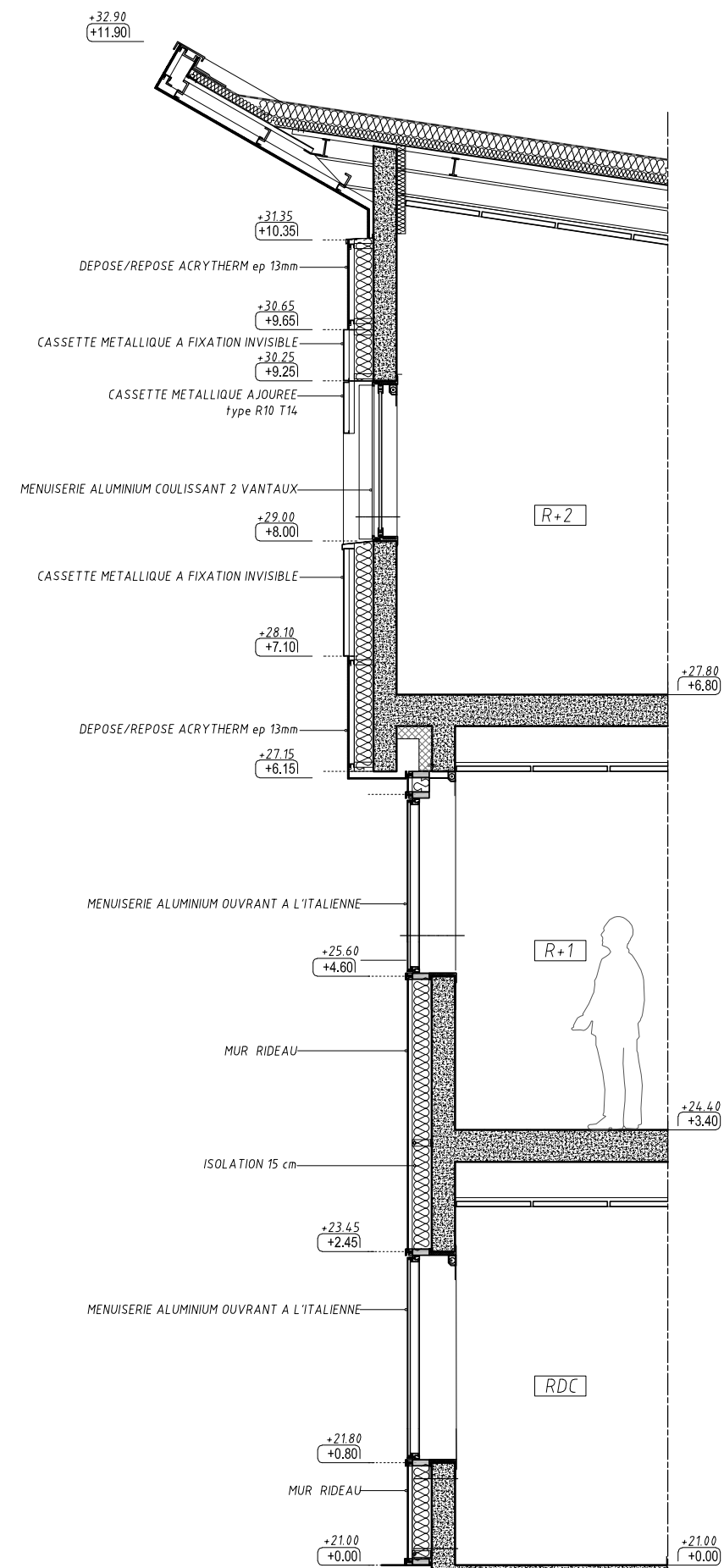
FACADE S/O PARTIE COURANTE
ECHELLE 1/50°



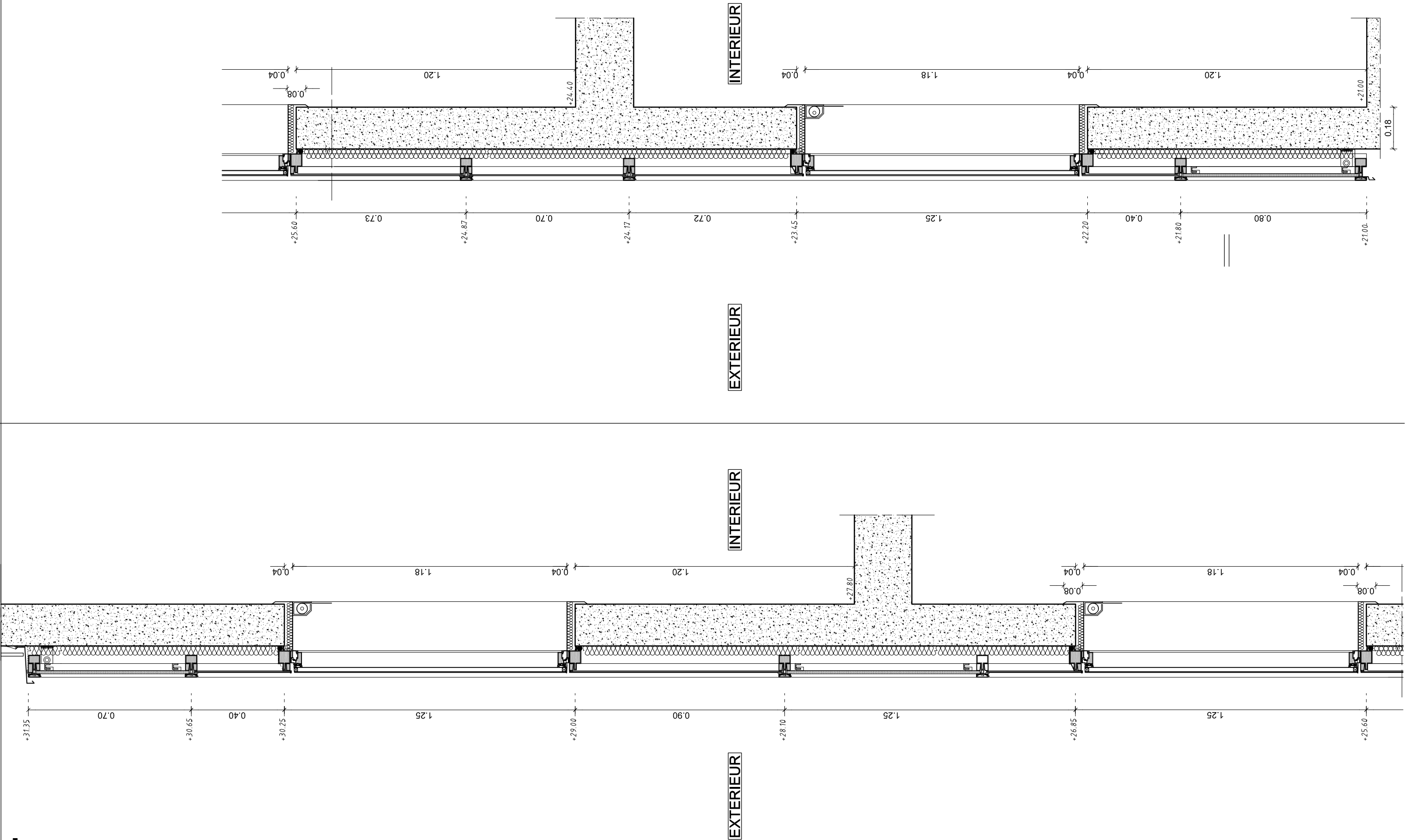
FACADE S/O PARTIE DE BIAIS
ECHELLE 1/50°

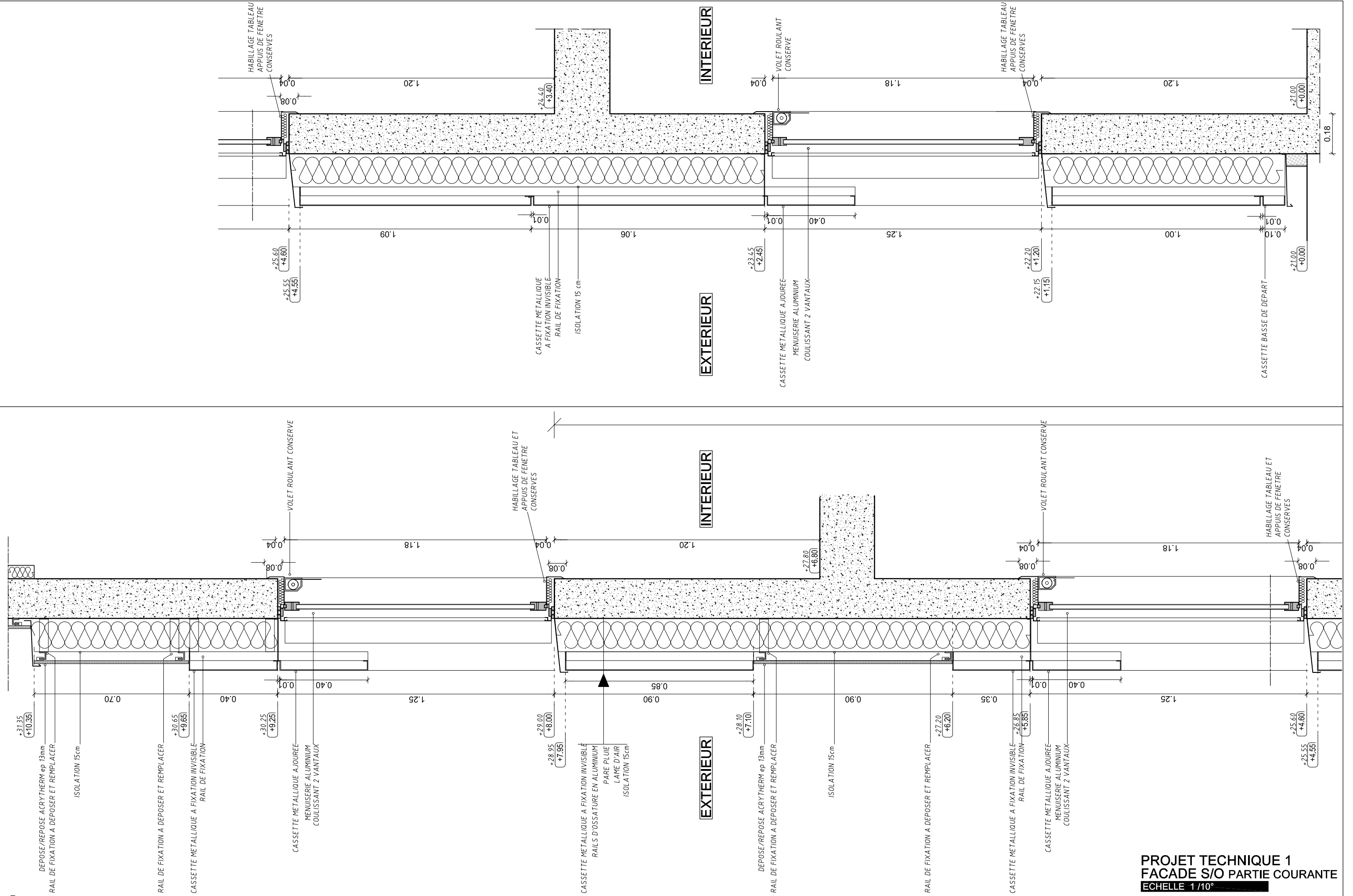


PROJET TECHNIQUE 1
FACADE S/O PARTIE COURANTE
Echelle 1/50°

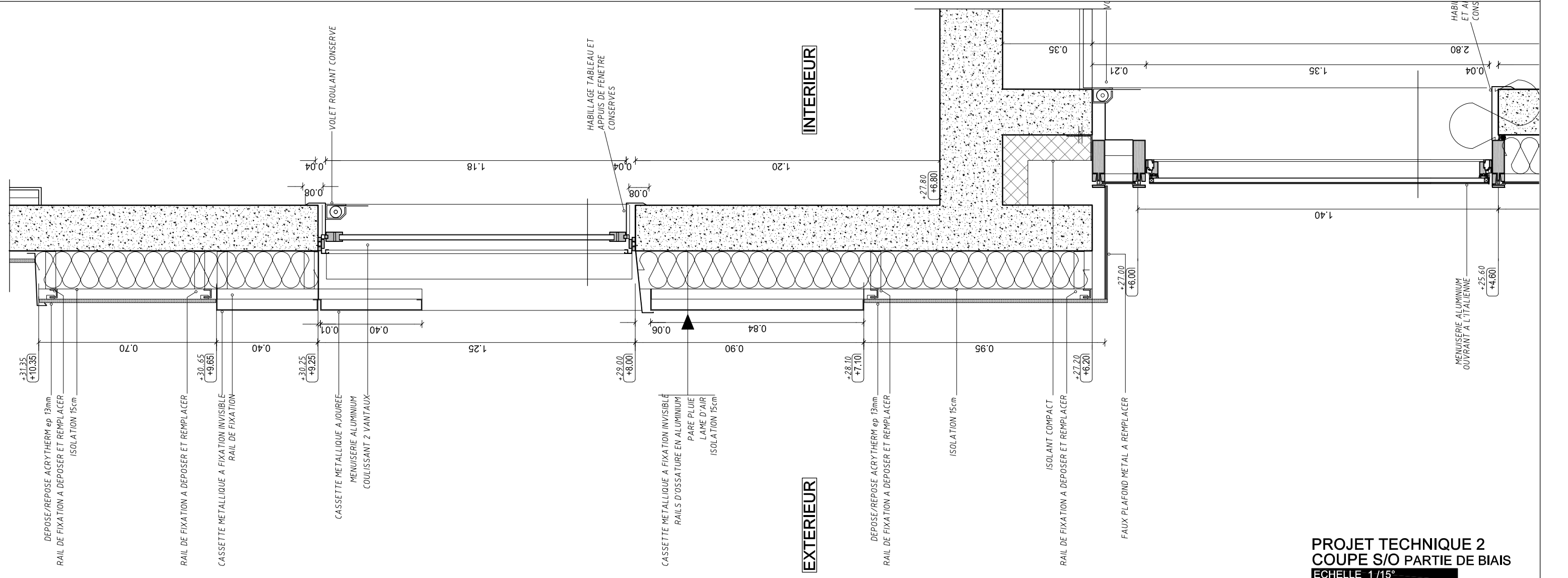
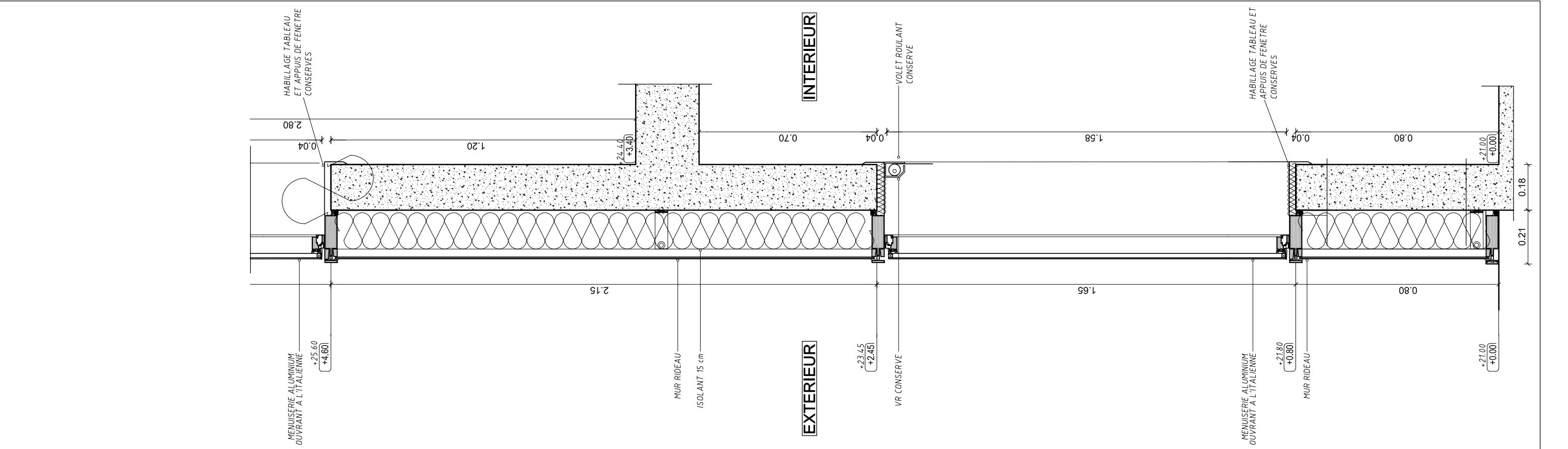


PROJET TECHNIQUE 2
FACADE S/O PARTIE DE BIAIS
Echelle 1/50°

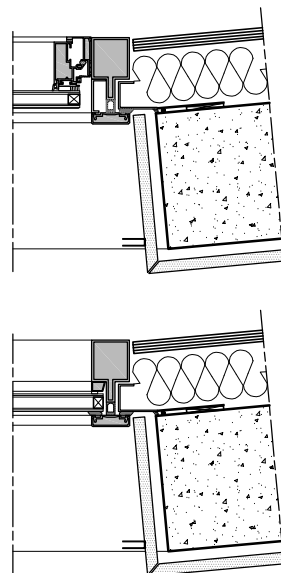
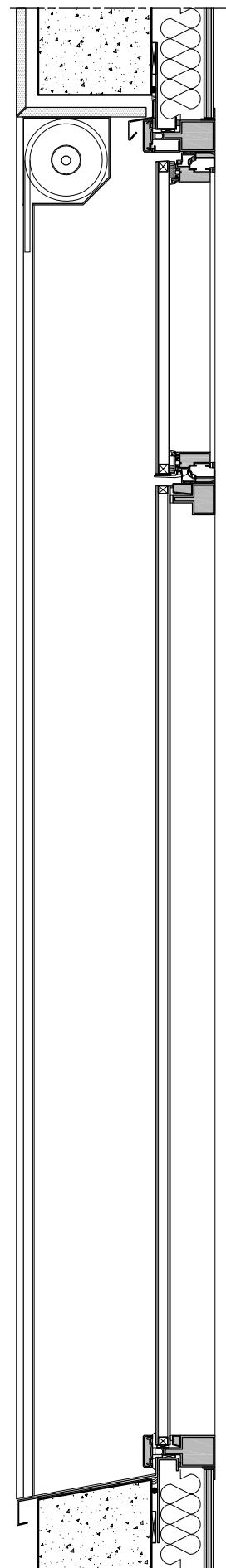




PROJET TECHNIQUE 1
FACADE S/O PARTIE COURANTE
Echelle 1/10°



PROJET TECHNIQUE 2
COUPE S/O PARTIE DE BIAIS
ECHELLE 1/15°



ETAT ACTUEL AMHI 300
ECHELLE 1/10°

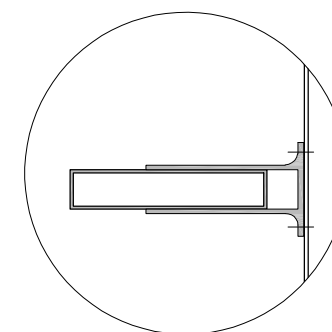
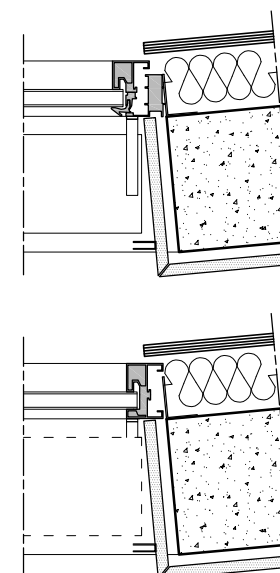
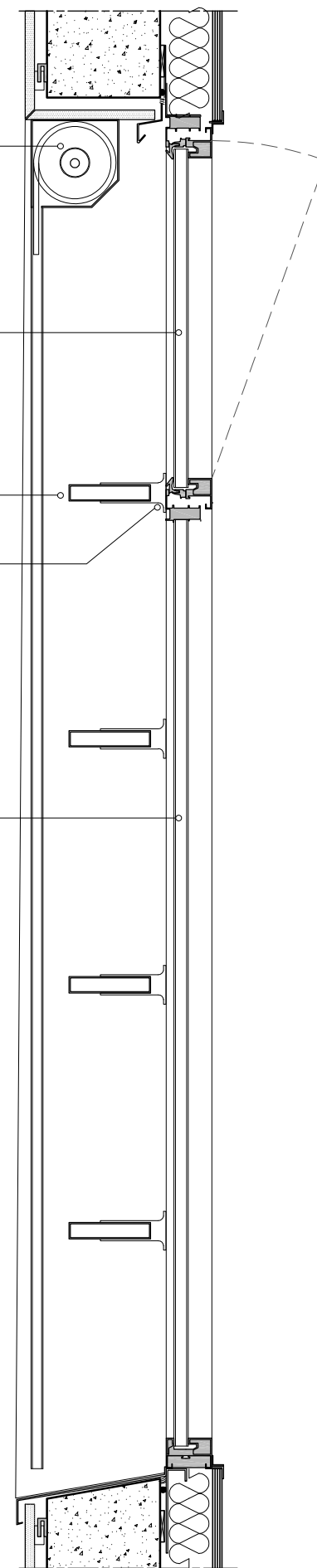
VOLET ROULANT CONSERVE

SOUFLET EN PARTIE HAUTE

BRISER SOLEILS HORIZONTALAUX

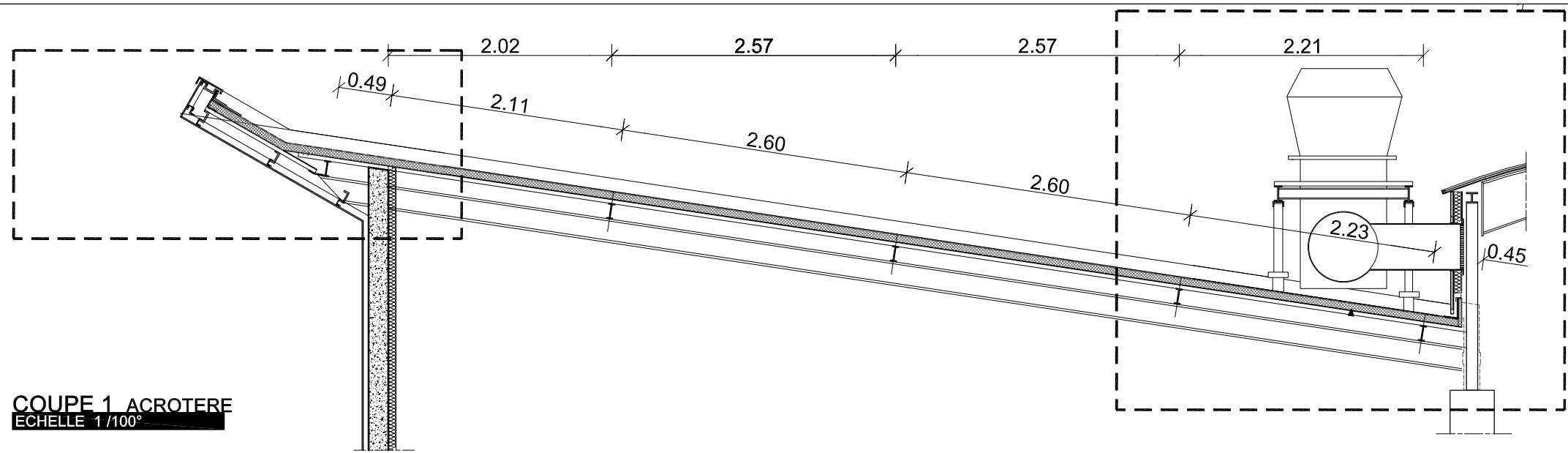
FIXATION LATÉRALE
SUR LE DORMANT DES BAIES

MENUISERIE FIXE EN PARTIE BASSE

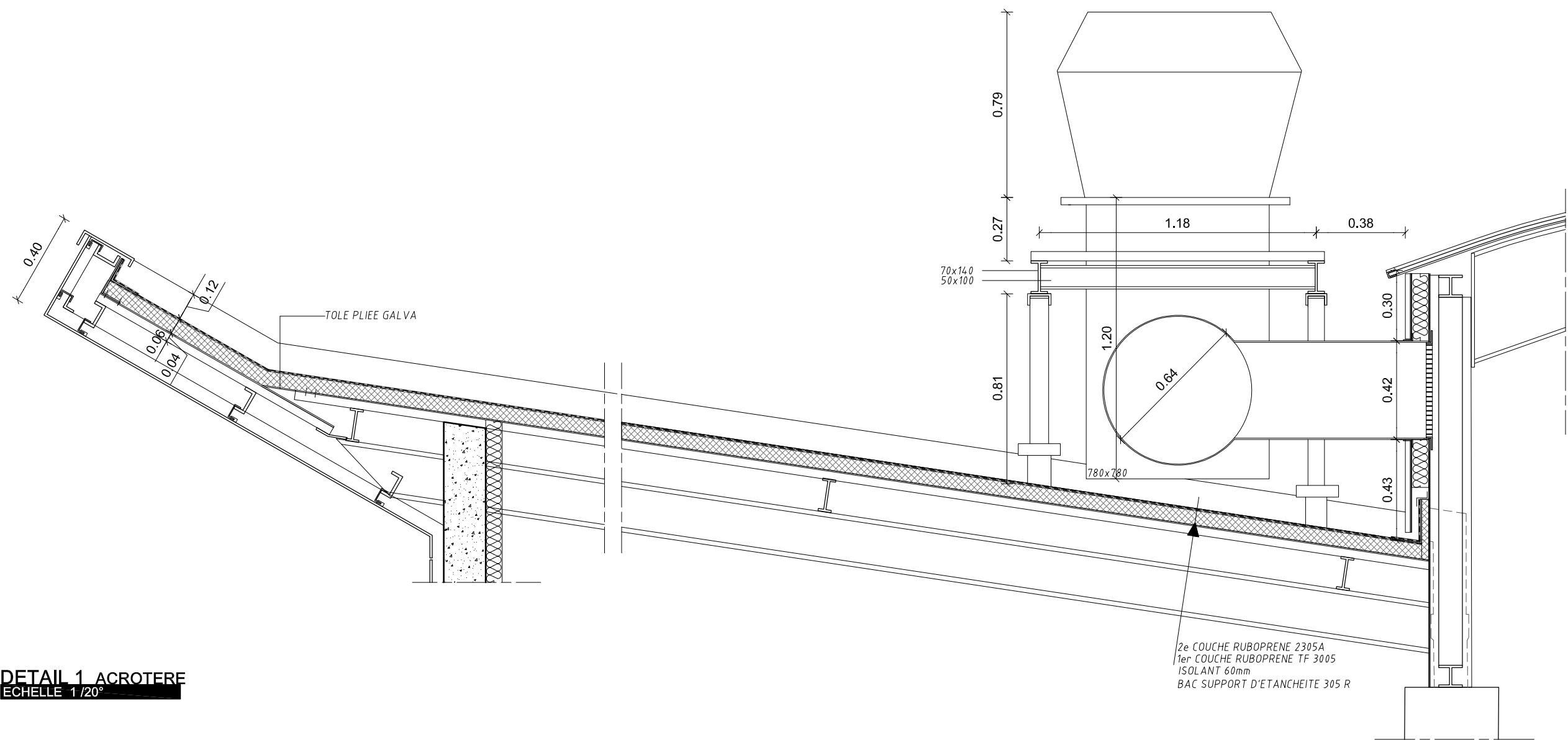


DETAIL FIXATION
ECHELLE 1/5°

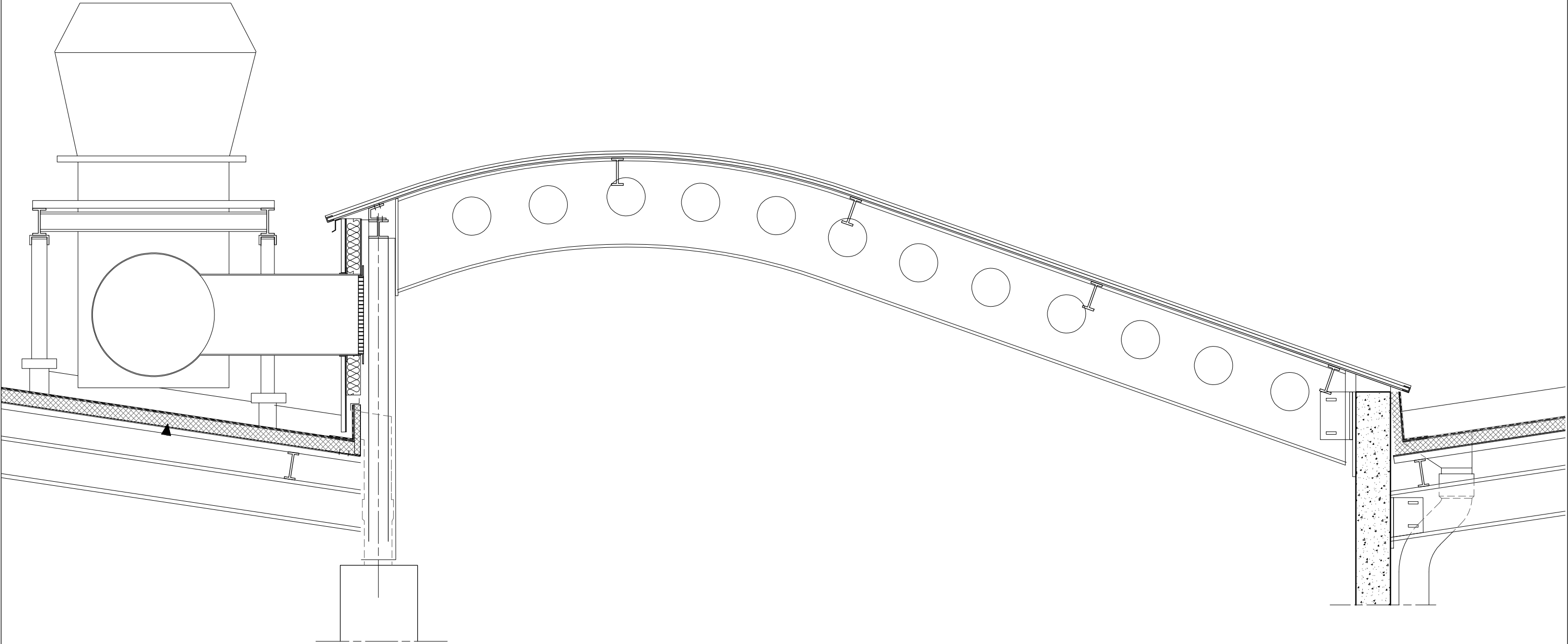
ETAT PROJET AMHI 300
ECHELLE 1/10°



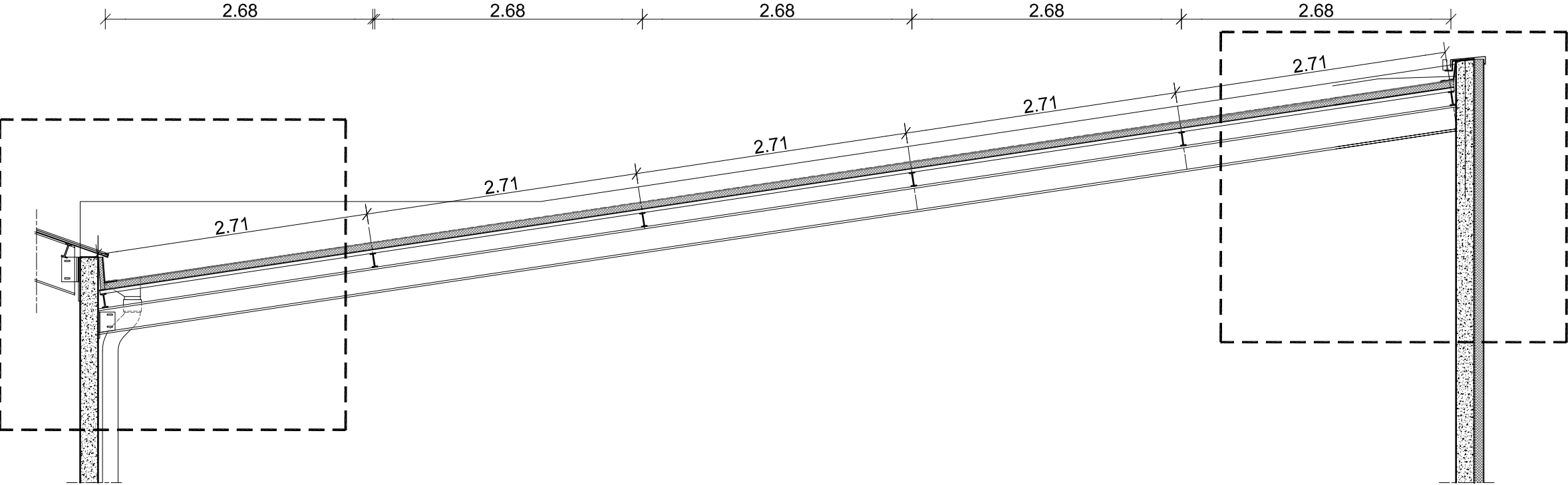
COUPE 1 ACROTÈRE
Echelle 1/100°



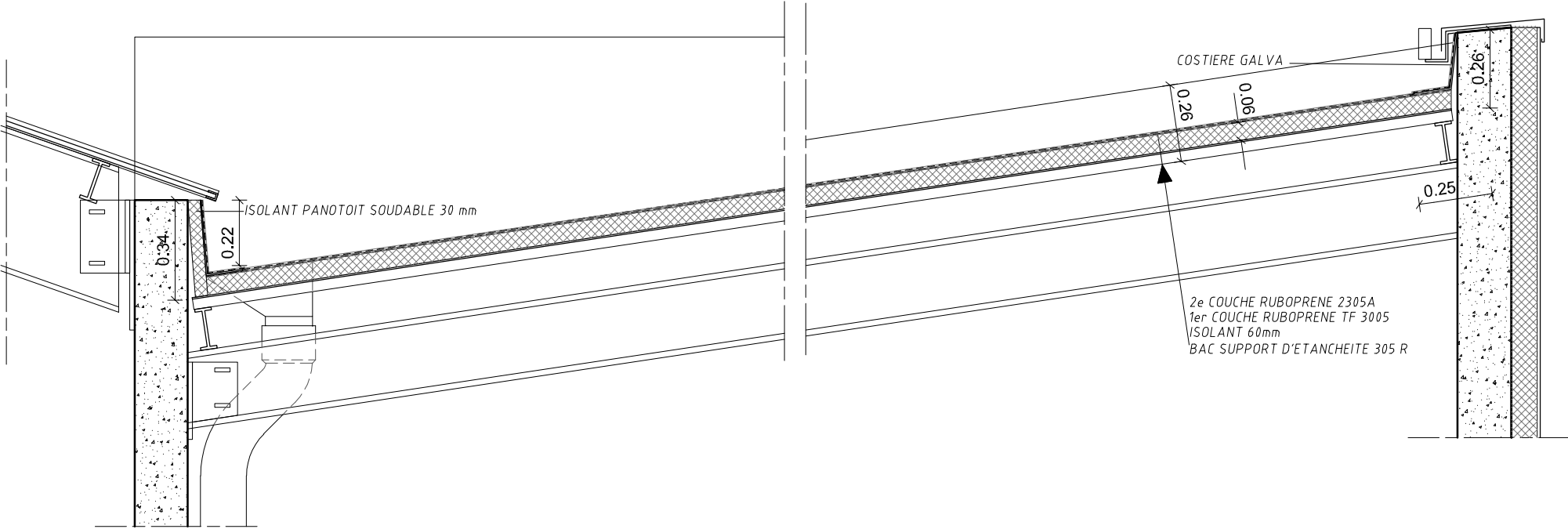
DETAIL 1 ACROTÈRE
Echelle 1/20°



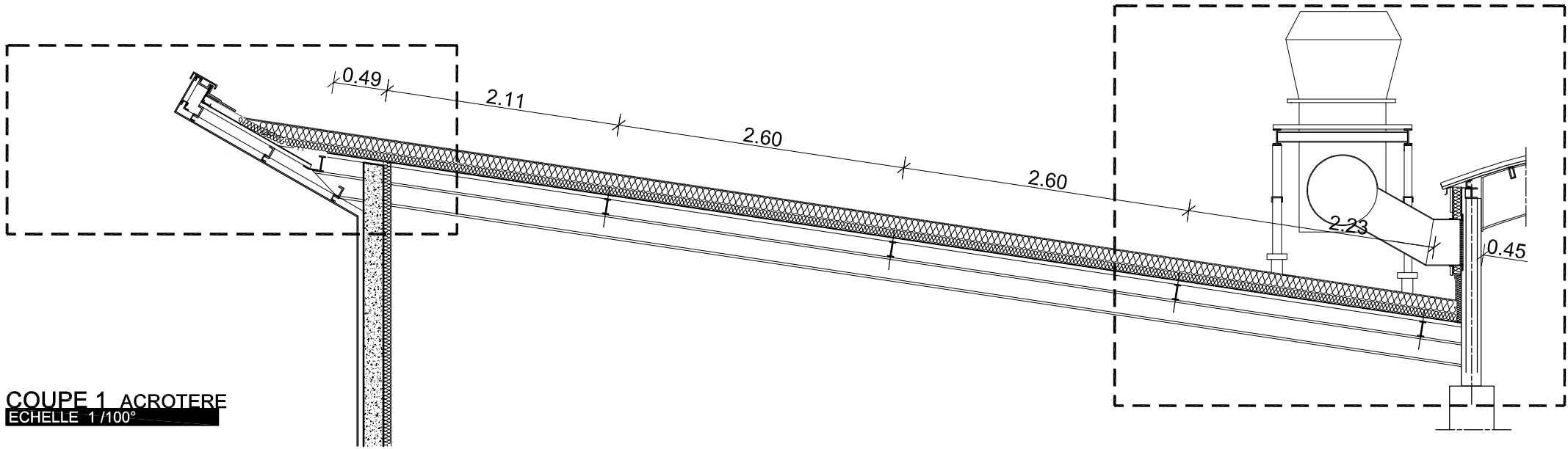
DETAIL VERRIERE
ECHELLE 1 /20°



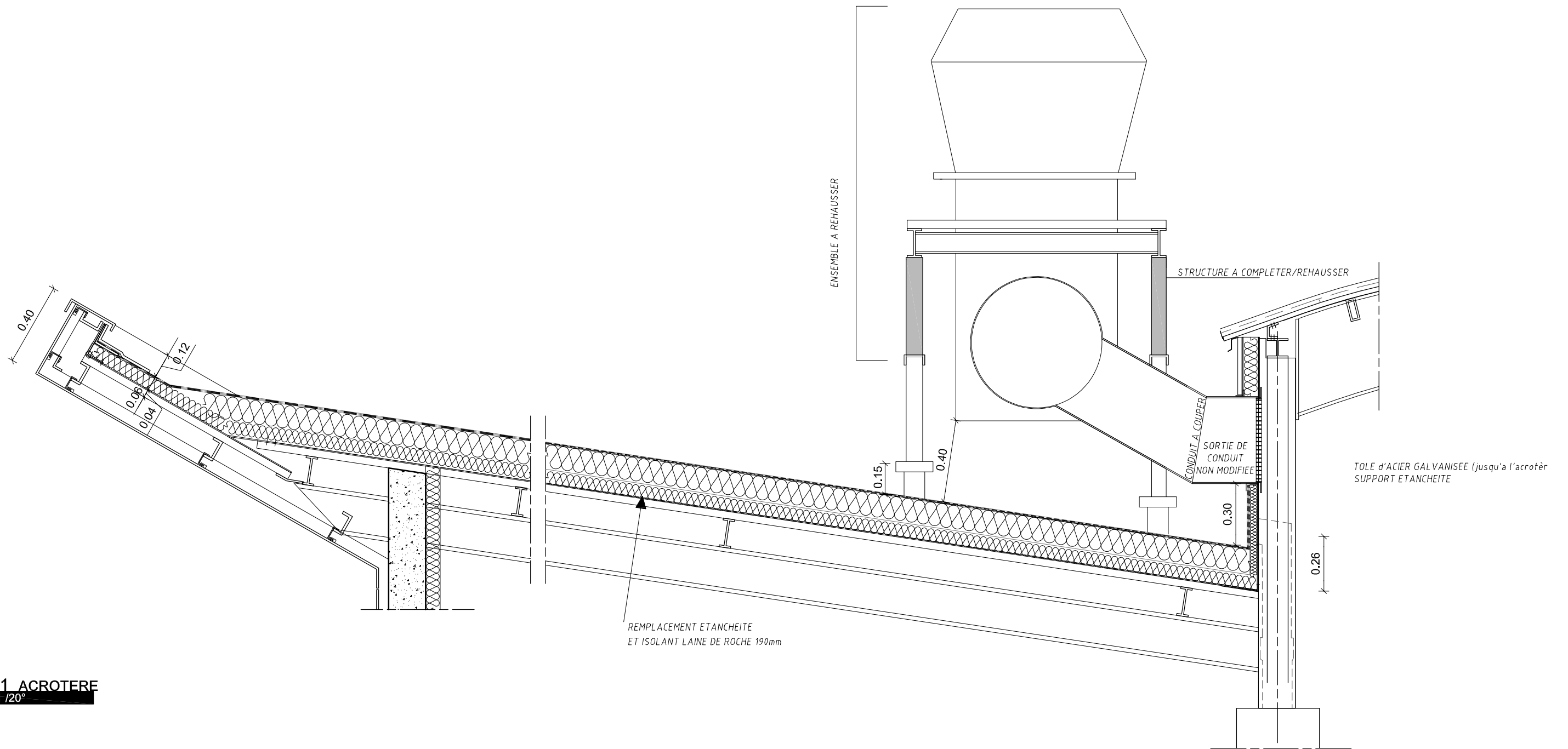
COUPE 2 ACROTÈRE
Echelle 1/100°



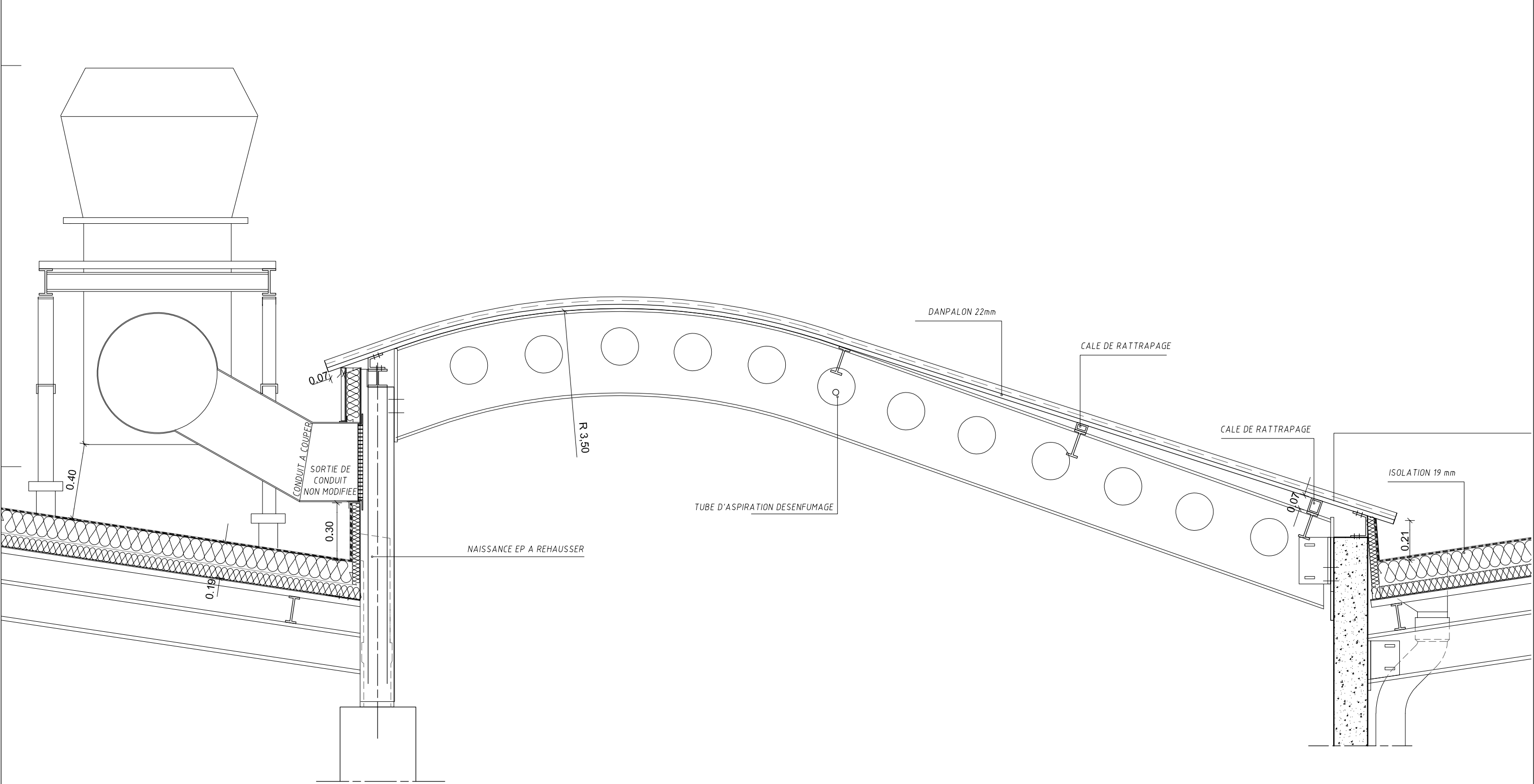
DETAIL 2 ACROTÈRE
Echelle 1/20°



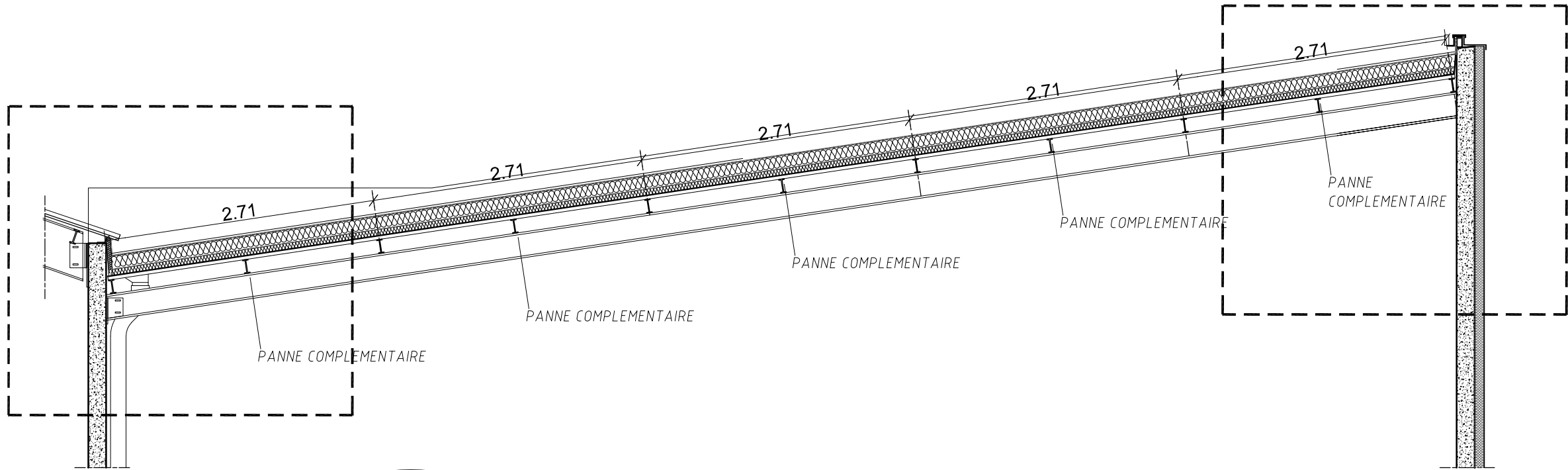
COUPE 1 ACROTÈRE
ECHELLE 1/100°



DETAIL 1 ACROTÈRE
ECHELLE 1/20°

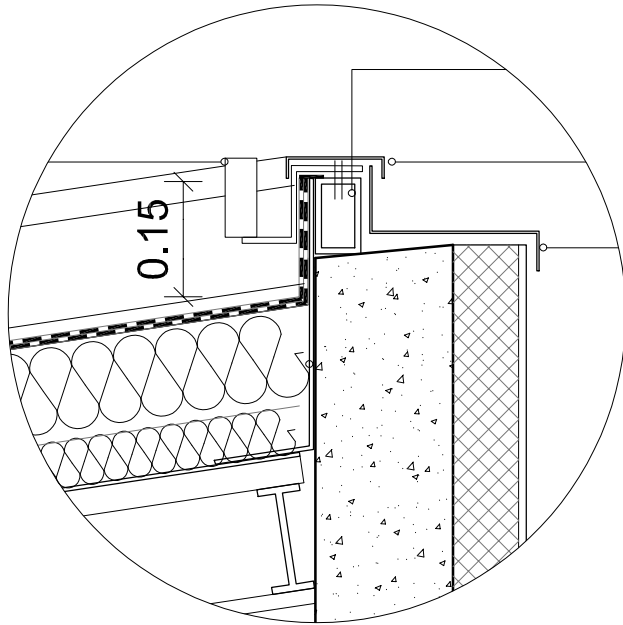
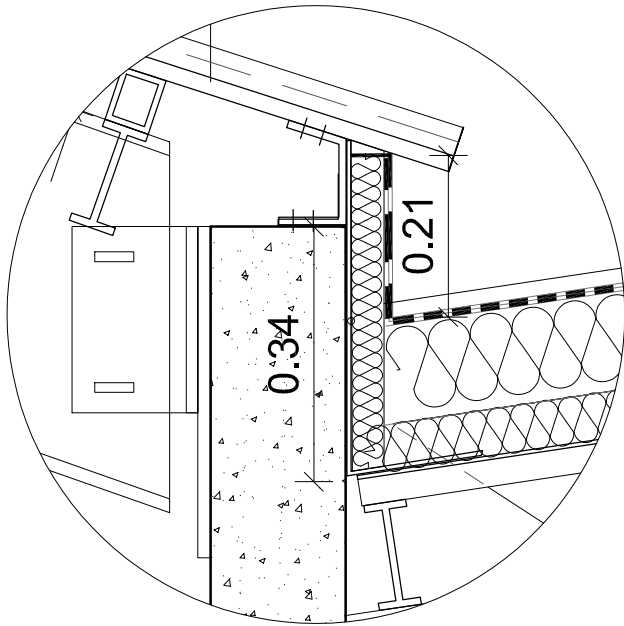


DETAIL VERRIERE
Echelle 1 / 20°

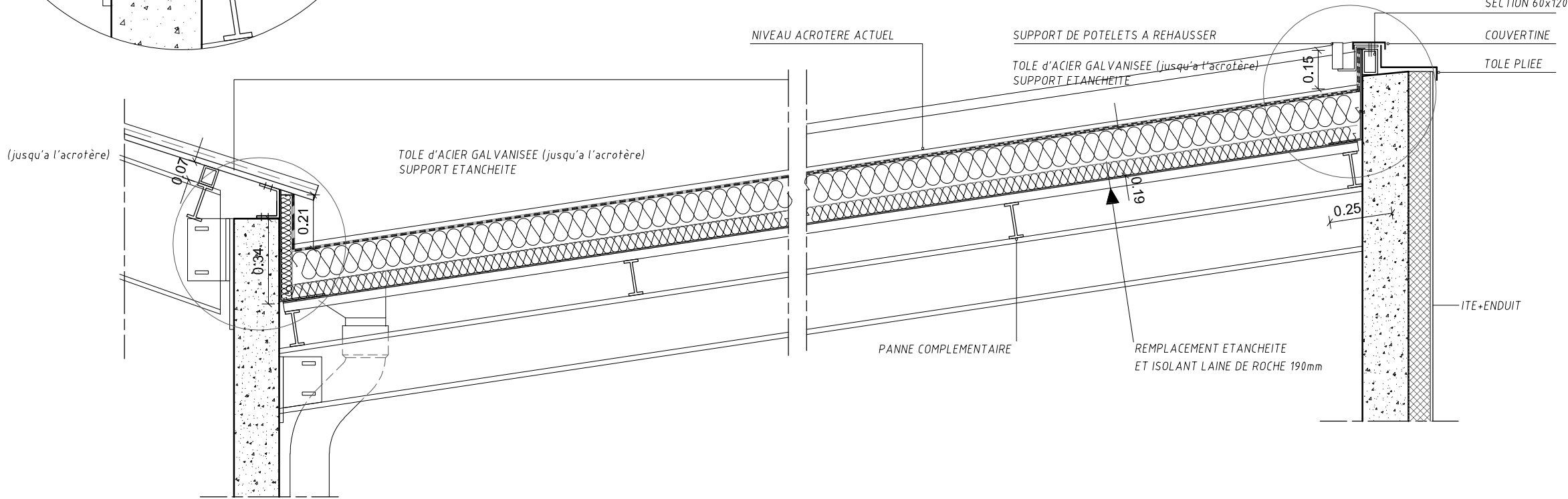


COUPE 2 ACROTÈRE

ECHELLE 1/100°

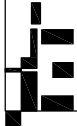


PROFIL
SECTION 60x120



DETAIL 2 ACROTÈRE

ECHELLE 1/20°



ÉDIFICES
ARCHITECTES

SAMUEL DE BOURGUES - Architecte DPLG - 10 rue chaussée saint Pierre - 49000 Angers - agence@edifices-architectes.fr

ANGERS- BATIMENT R / ENSAM

DOSSIER

ETAT PROJET - ACROTÈRES

DOCUMENT

20°

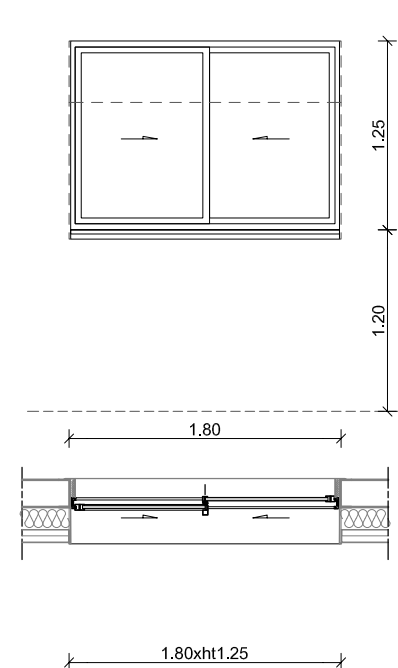
ECHELLE

24.09.2021

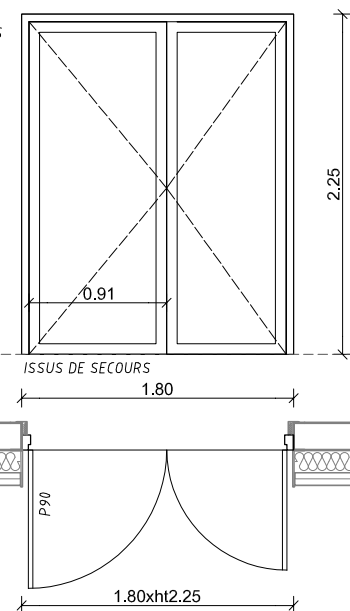
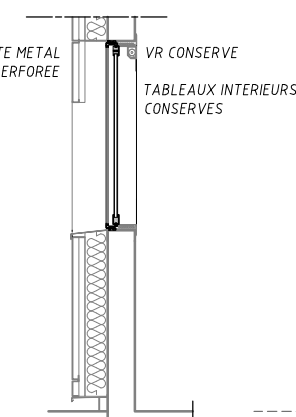
DATE

N°

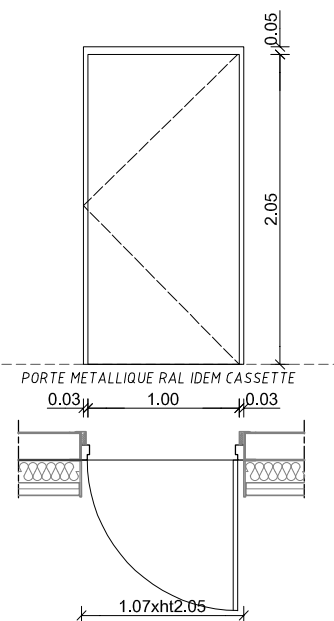
DCE



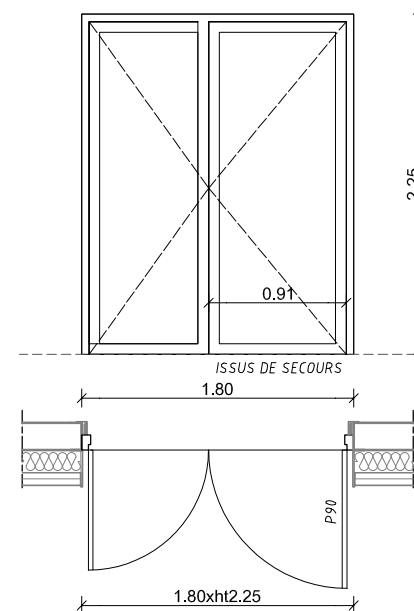
TYPE 1
CHÂSSIS VITRE
M0-01, M0-02, M0-04, M0-05, M0-06, M0-07, M0-08, M0-09
M1-01, M1-02, M1-03, M1-04, M1-05, M1-06, M1-07, M1-08,
M1-09, M1-10, M1-11,
M2-01, M2-02, M2-03, M2-04, M2-05, M2-06, M2-07, M2-08,
M2-09, M2-10, M2-11, M2-12, M2-13, M2-14, M2-15, M2-17
M2-18, M2-19, M2-20, M2-21, M2-22, M2-23, M2-24, M2-25
M2-26



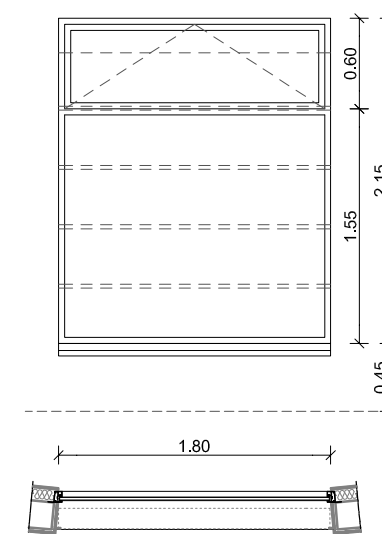
TYPE 3
PORTE BATTANTE 2 VANTAUX
M0-03, M0-17



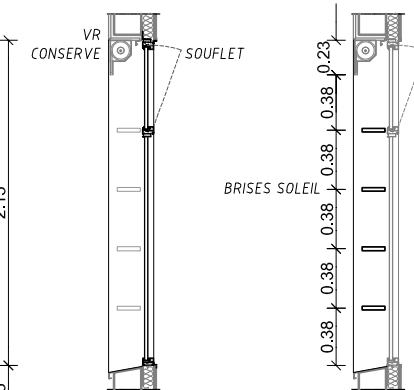
TYPE 4
ACCES GAINÉ TECHNIQUE
M0-10



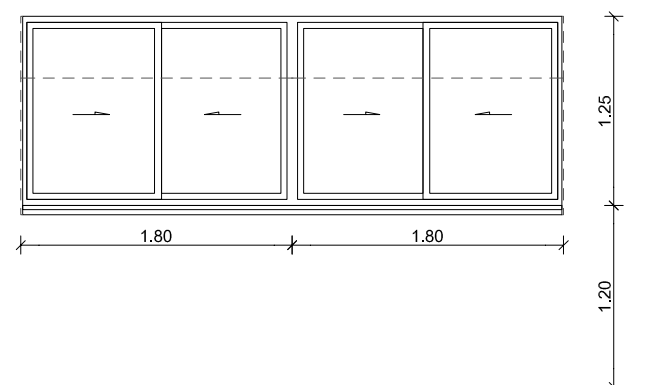
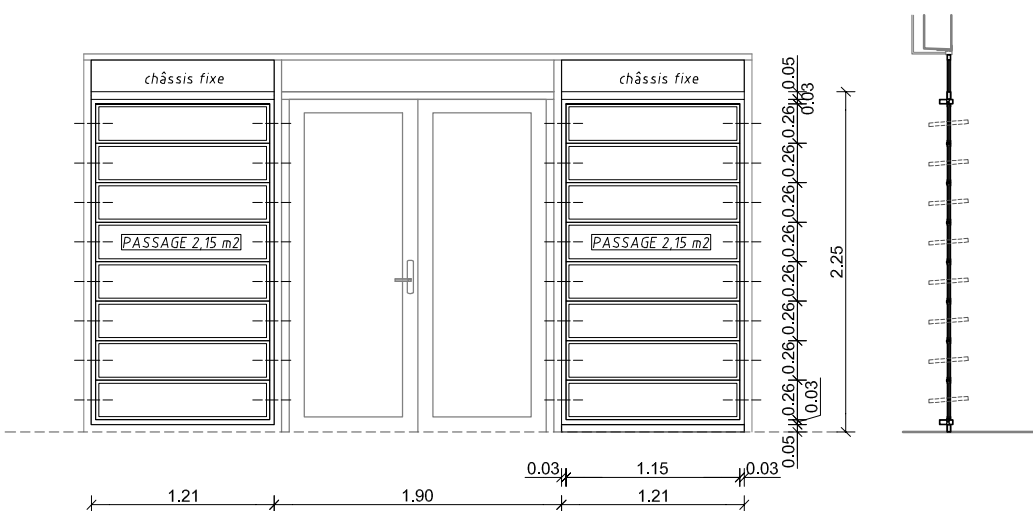
TYPE 3
PORTE BATTANTE 2 VANTAUX
M0-18



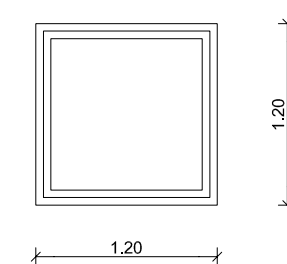
TYPE 5
CHÂSSIS VITRE
M0-11, M0-12, M0-13, M0-14, M0-15, M0-16



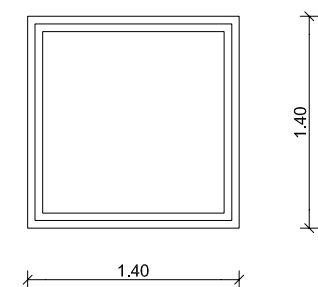
CAPOT DE PROTECTION SOLAIRE



TYPE 2
CHÂSSIS VITRE
M2-16



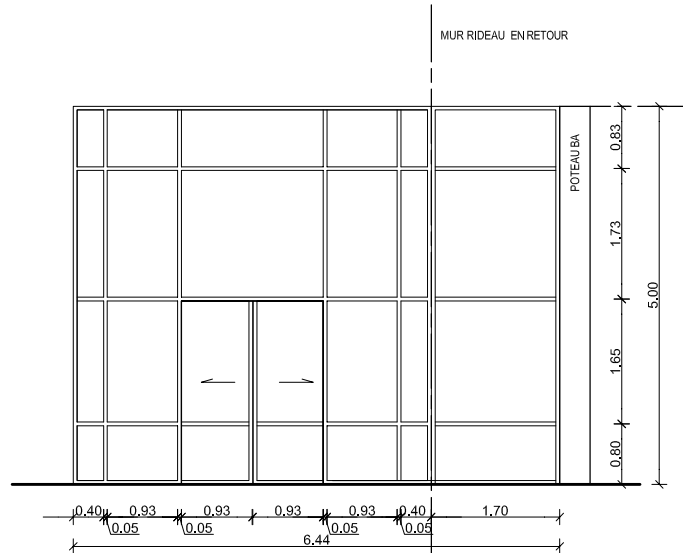
SKYDOME DE DESENFUMAGE
MT-01, MT-02, MT-06, MT-17



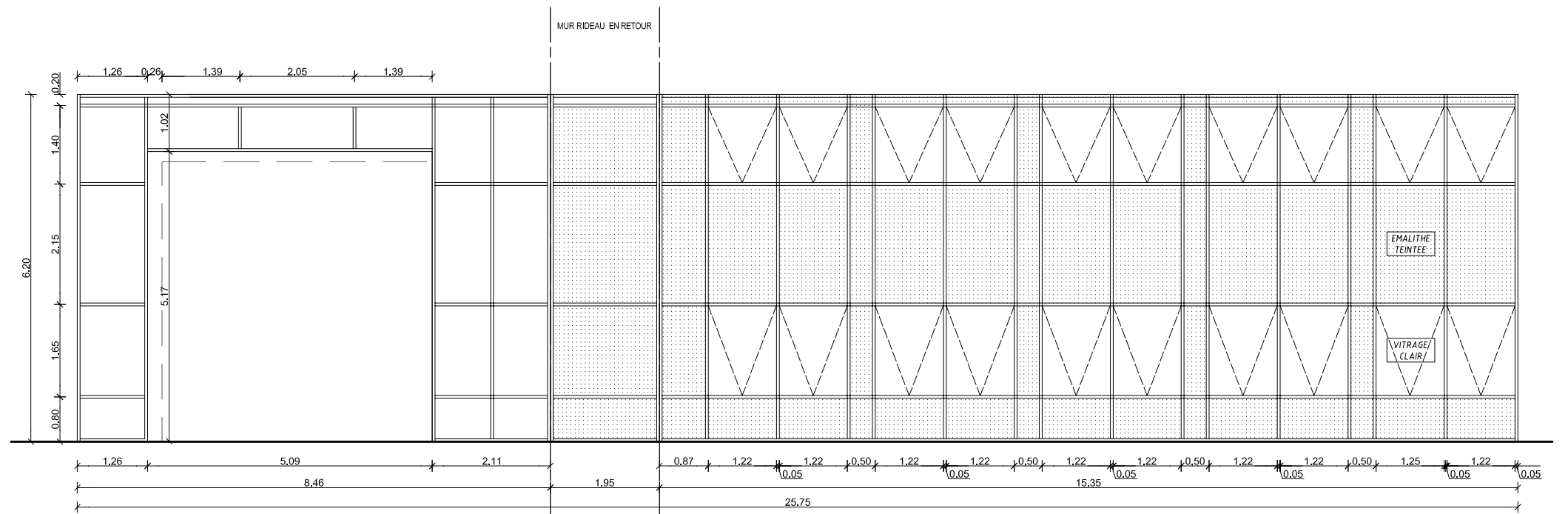
SKYDOME
AVEC PROTECTION SOLAIRE
MT-03, MT-04, MT-05, MT-07, MT-08, MT-09, MT-10
MT-11, MT-12, MT-13, MT-14, MT-15, MT-16, MT-18
MT-19, MT-20, MT-21

AJOUT VENTELLES DE VENTILATION type Agora Sodesi
DANS ENSEMBLE MENUISE CONSERVE

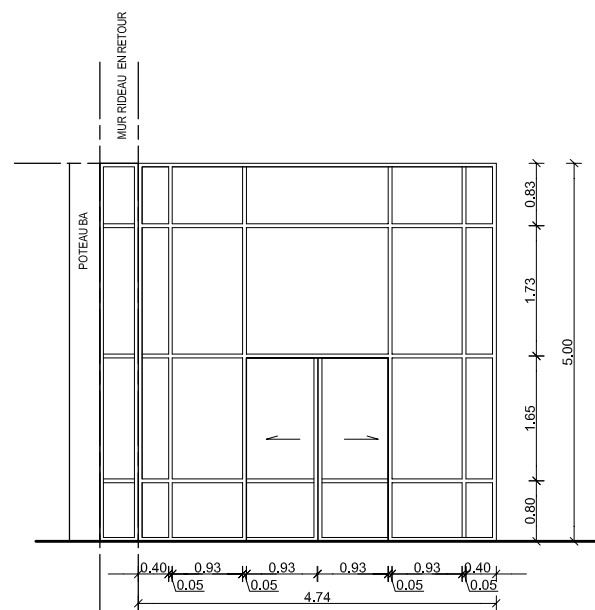
M0-19,



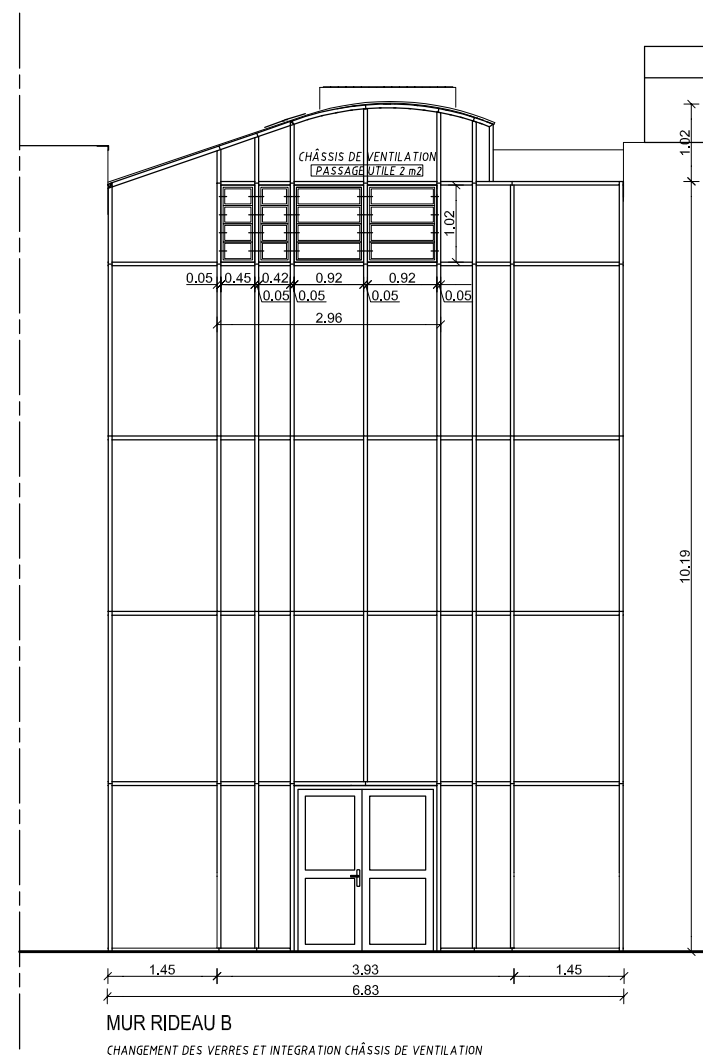
MUR RIDEAU A2
REPLACEMENT DU MUR RIDEAU



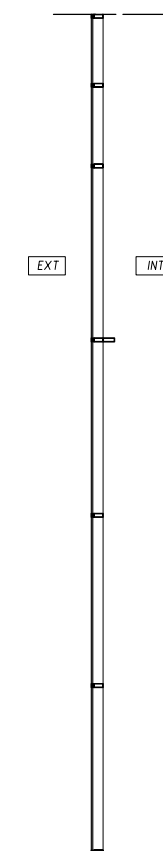
MUR RIDEAU A1
REPLACEMENT DU MUR RIDEAU



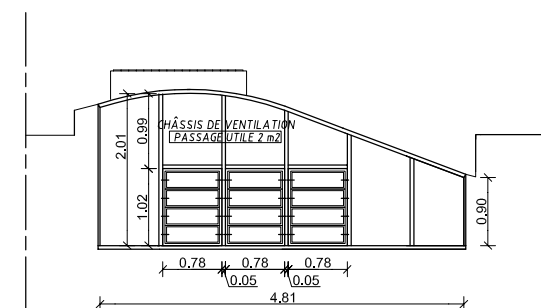
MUR RIDEAU A3
REPLACEMENT DU MUR RIDEAU



MUR RIDEAU B
CHANGEMENT DES VERRES ET INTEGRATION CHÂSSIS DE VENTILATION



COUPE DE PRINCIPE



PIGNON SUD
MUR RIDEAU C
CHANGEMENT DU D'AMALON POUR ENSEMBLE MENUISE VITRE
AVEC CHÂSSIS DE VENTILATION

